

Hanby Environmental



W A T E R



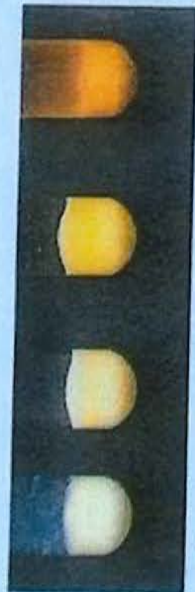
2012

CALIBRATION

Photo Booklet

H.E.L.P., Inc. Water Test Kit

Petroleum Contamination in Water, mg/L (PPM)



Benzene



Toluene



m-Xylene



Regular Gasoline



Unleaded Gasoline



Super Unleaded Gasoline



Diesel



Kerosene



Napthalene



PCB's (note 1)



PCB's (note 2)

Petroleum Contamination in Water mg/L (PPM)

Hanby Environmental LLC
On-Site TPH Test Kit

1772 W Sam Houston Pkwy N
Houston TX 77043
713-468-3898
877-806-0901
www.HanbyEnvironmental.com

NOTE 1 - MIXTURE OF AROCLORS 1016, 1232, 1248, 1260.

★ This chart represents test results of 500 ml. samples of water containing the labeled amounts of contaminant.

NOTE 2 - MIXTURE OF AROCLORS 1221, 1242, 1254.

Hanby Field Test Kit for Petroleum Contaminants in Water, mg/L (PPM)



Benzene



Regular Gasoline



Diesel



PCB's (note 1)



Toluene



Unleaded Gasoline



Kerosene



PCB's (note 2)



p-Xylene



Super Unleaded Gasoline



Napthalene



**1772 West Sam Houston Parkway North
Houston, TX 77043
281.996.3679 www.hanbytest.com**

A Calibration Photograph of the Contaminant
of your concern can be prepared and inserted
HERE

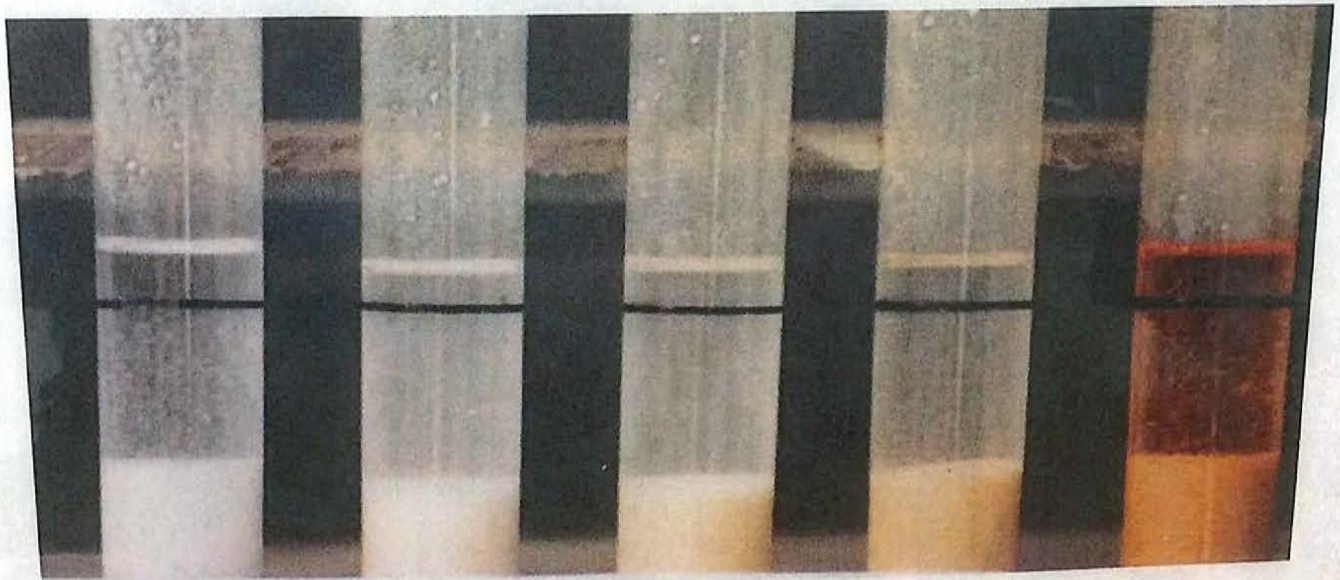
NOTE 1 - MIXTURE OF AROCLORS 1016, 1231, 1248, 1260.
This chart represents test results of 500 ml. samples of water containing the labeled amounts of contaminant.

NOTE 2 - MIXTURE OF AROCLORS 1221, 1242, 1254



0 10 50 75 100 125 150 200

OIL/GREASE IN WATER, mg/L (PPM)

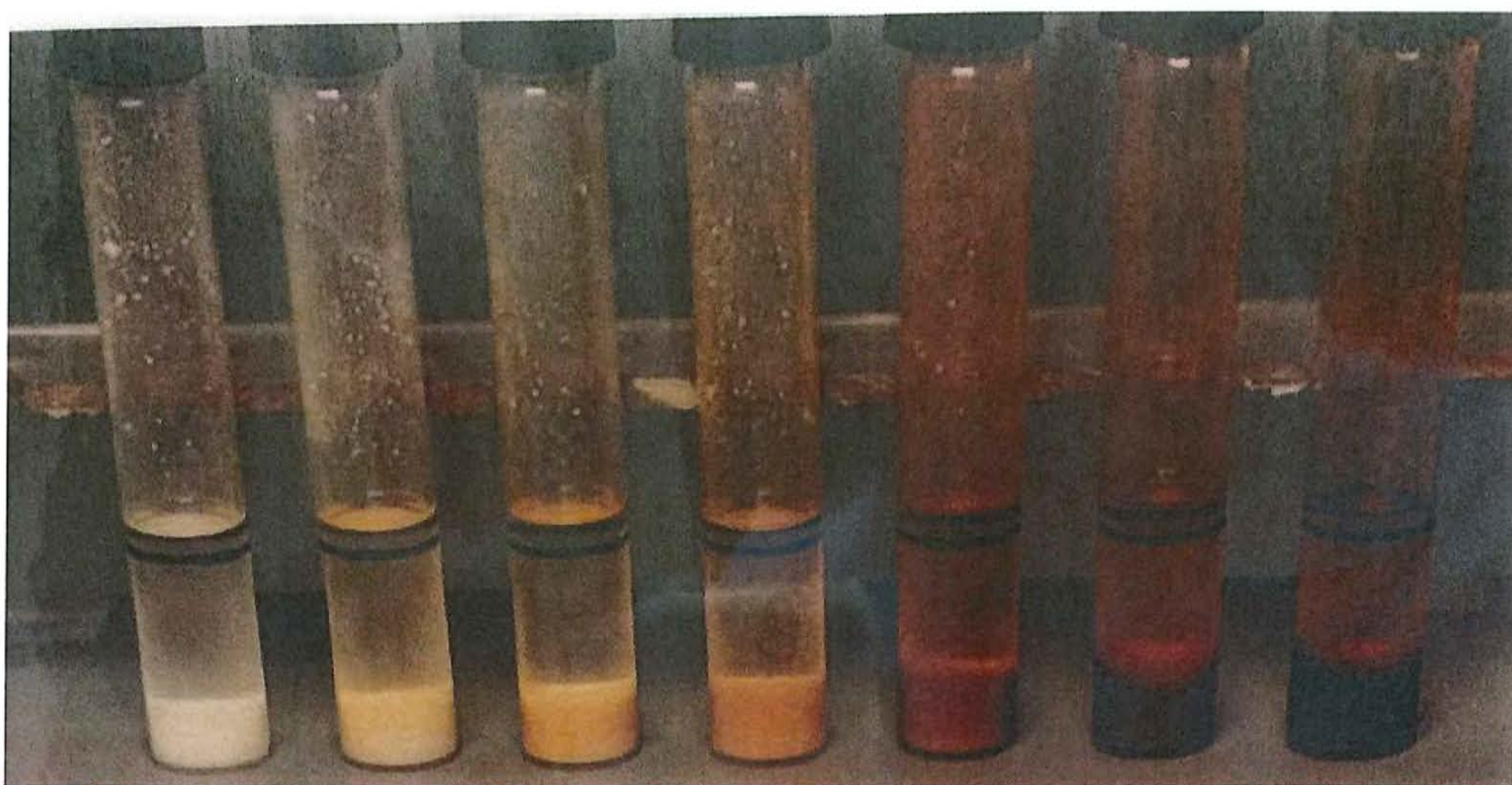


BLK .25 1.0 2.5 10

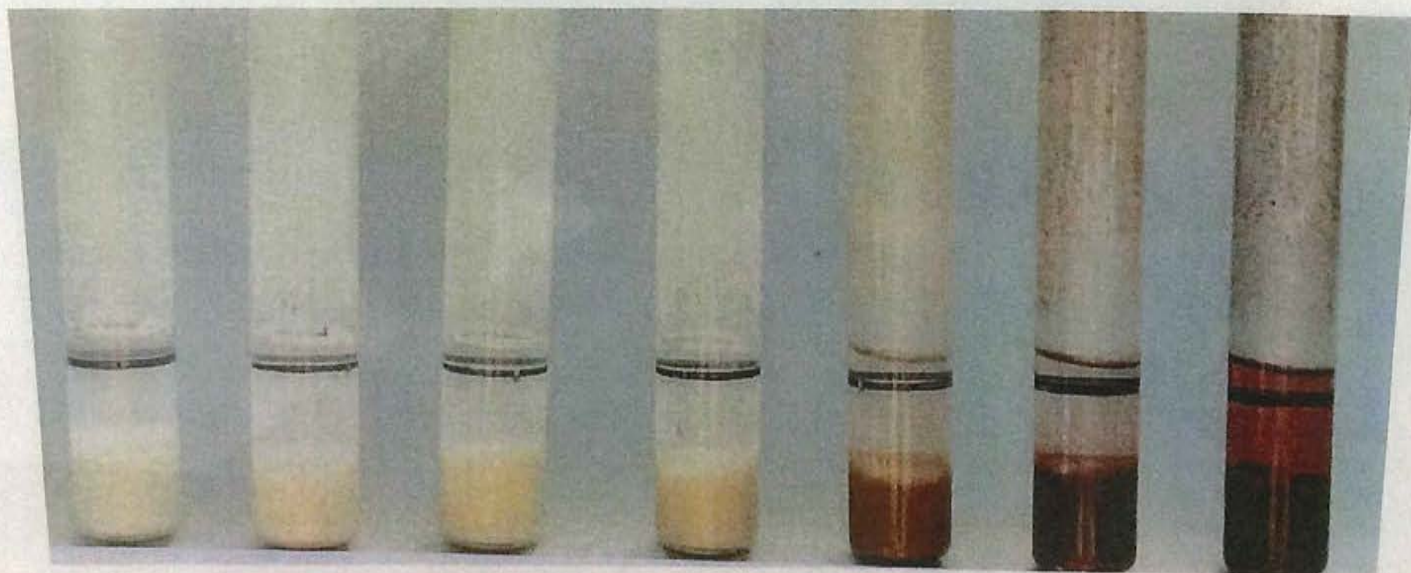
MINERAL OIL IN WATER, mg/L (PPM)



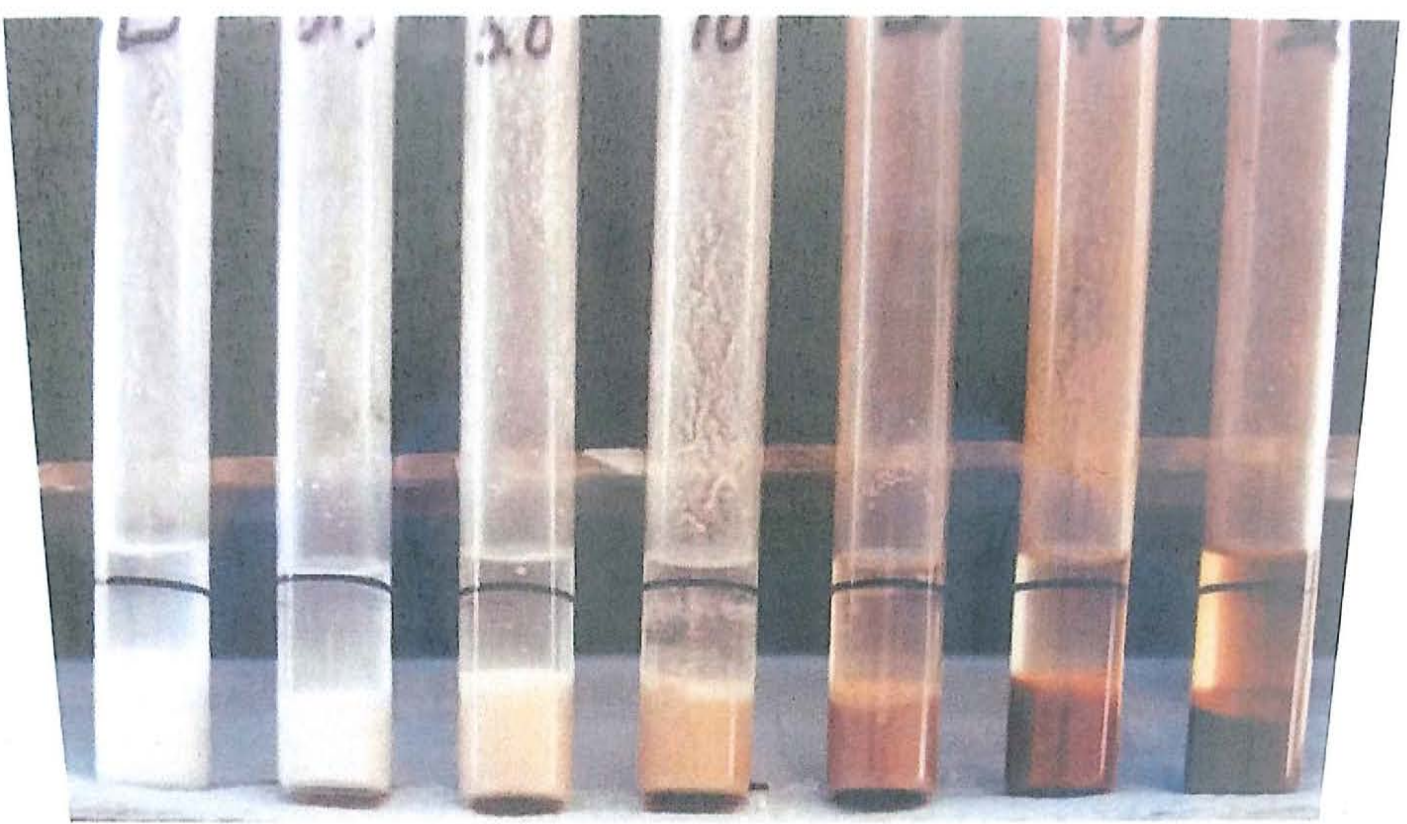
Hanby
Environmental LLC



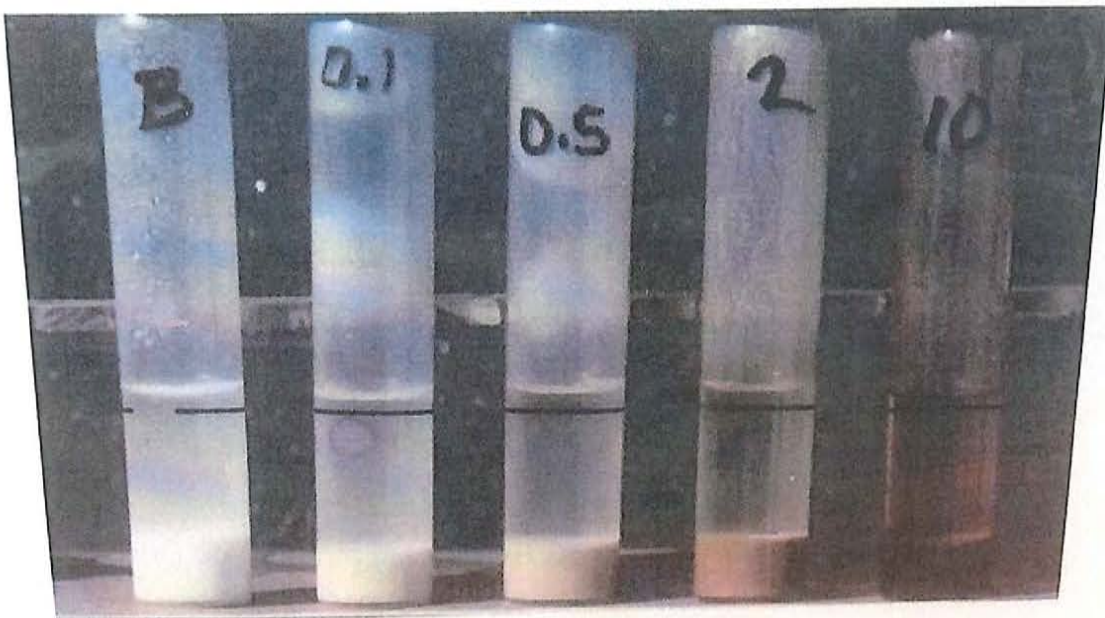
BLK 0.1 0.5 1.0 5.0 10 20
GASOLINE IN WATER, mg/L



BLK 0.2 0.5 1.0 5.0 10 20
DIESEL FUEL IN WATER, mg/L (PPM)



BLK 0.5 5.0 10 20 40 50
Lt. Sw. Cr. mg/L (PPM) IN WATER



BLK 0.1 0.5 2.0 10
HEAVY CRUDE OIL IN WATER, mg/L

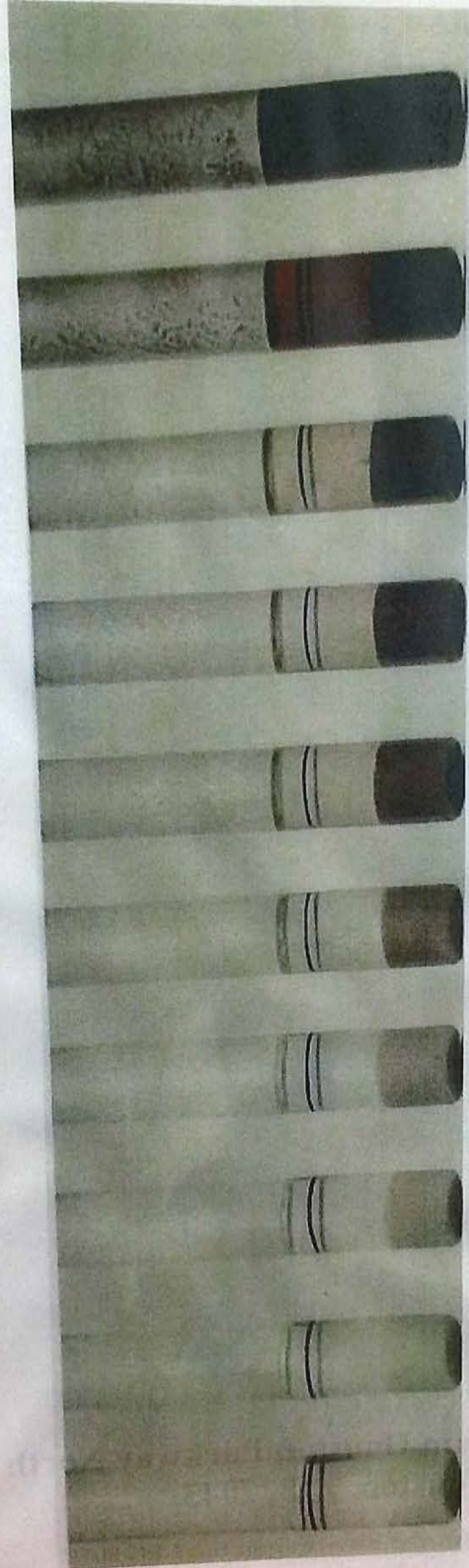


BLK	0.02	0.05	0.20	0.50	2.00	5.00	10.00
-----	------	------	------	------	------	------	-------

TOLUENE IN WATER, mg/L (PPM)



BLK 0.5 1.0 2.5 5.0 10 25 50
PICEANCE CONDENSATE IN WATER, mg/L (PPM)



BLK 0.1 0.5 1.0 2.5 5.0 7.5 10 25 50

MC 252 (Deepwater Horizon) CRUDE OIL IN WATER, mg/L (PPM)